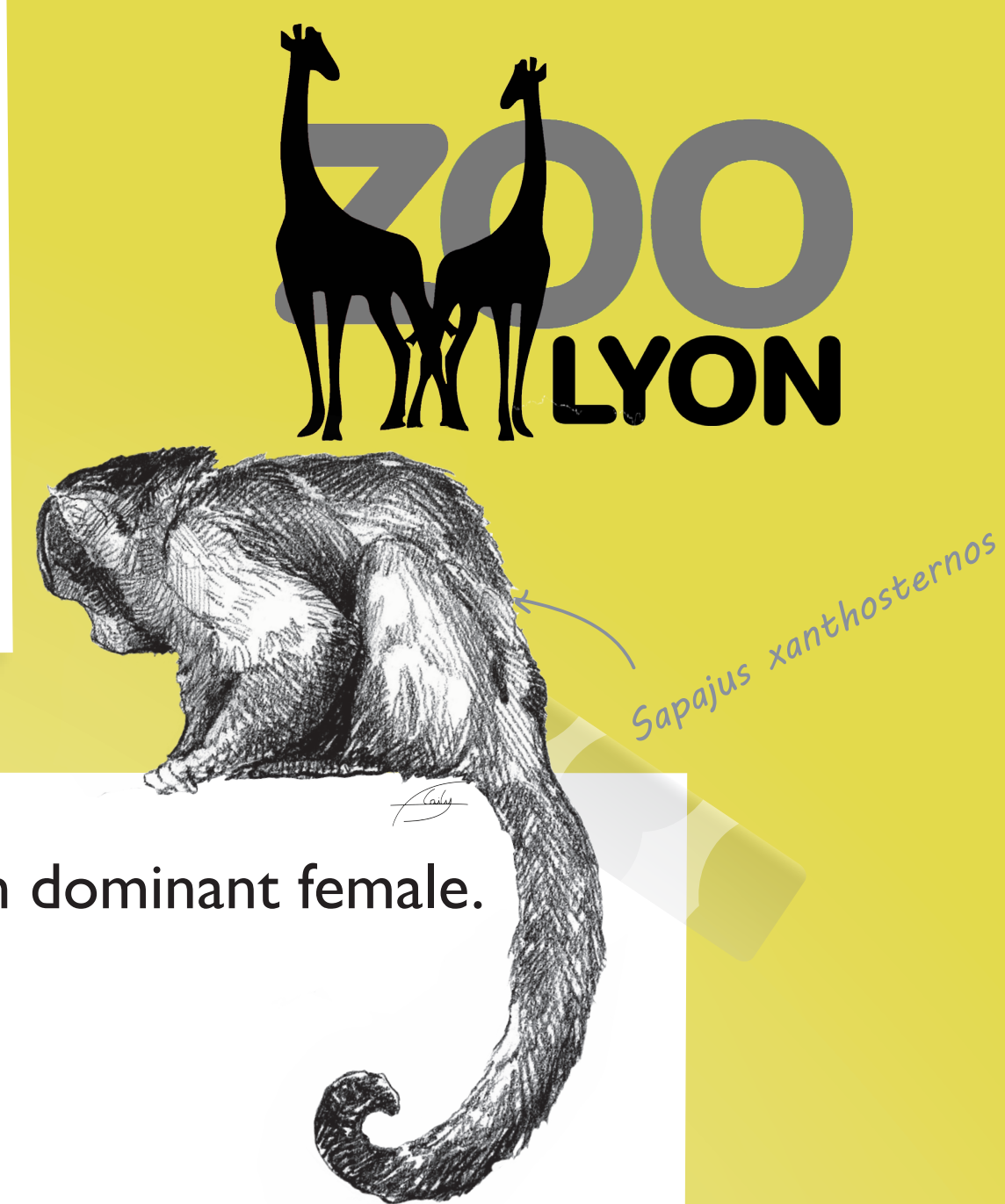


Want more ?

Social and spatial organization in yellow-breasted capuchins at Lyon Zoo (*Sapajus xanthosternos*)

M. Carriquiry, L. Ohannessian, G. Anfray, X. Vaillant
Université Paris 13 - Zoo de Lyon



Social organization is very important in capuchins with the dominance of an alpha couple, with dominant female.

**Why ?
What ?**

Hierarchy's problems and conflicts in group of Lyon Zoo

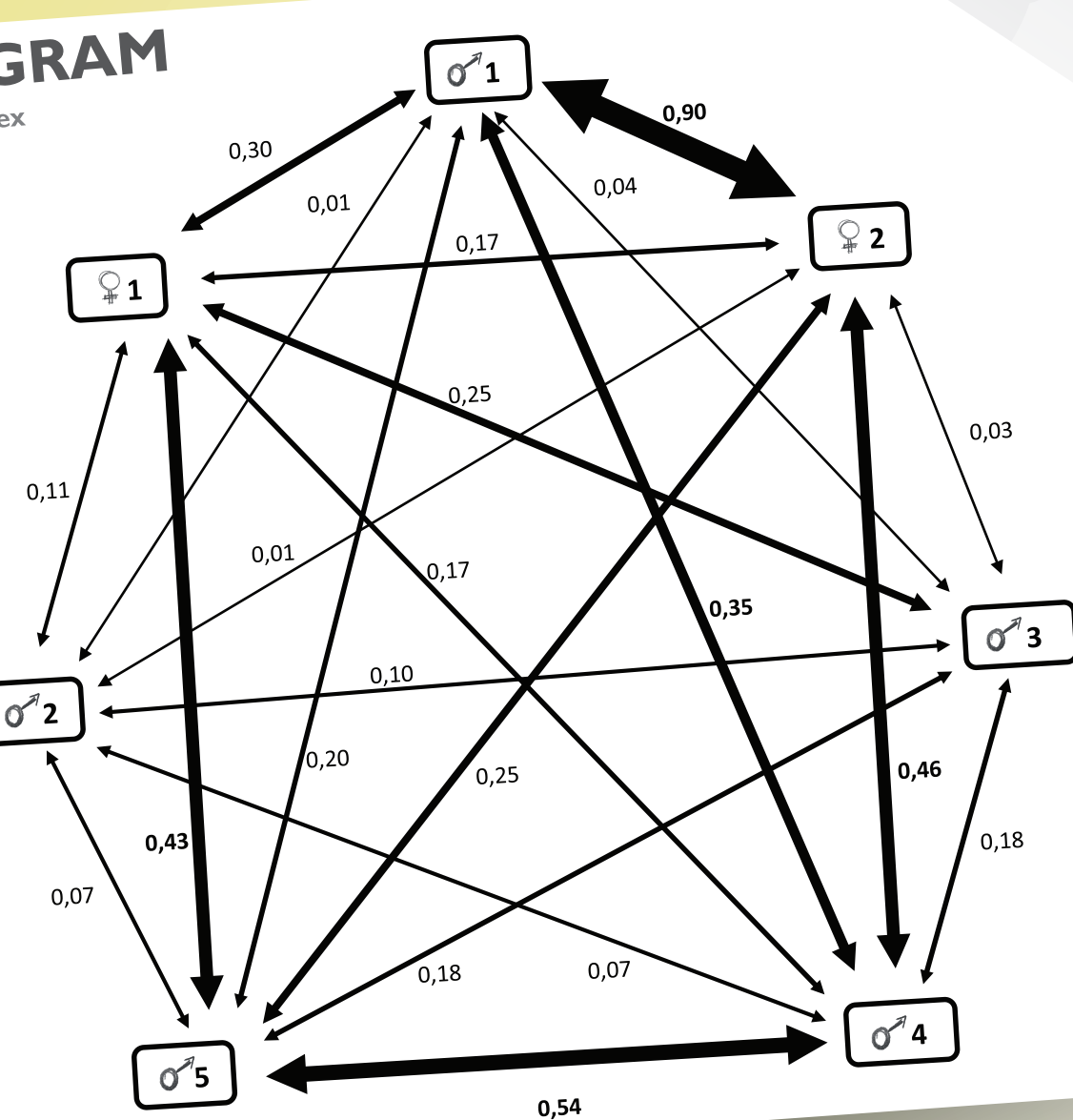
1. Spatial organization (with contact and/or distance)
2. Hierarchy (with offensive and defensive behaviors)
3. Tolerance (with agonistic and affiliative interactions)

**Hypothesis ?
How ?**

The dominant couple σ_1 φ_1 would be the first breeding couple suggested by the coordinator.
Scan sampling and focal observations to obtain association, hierarchy and tolerance index

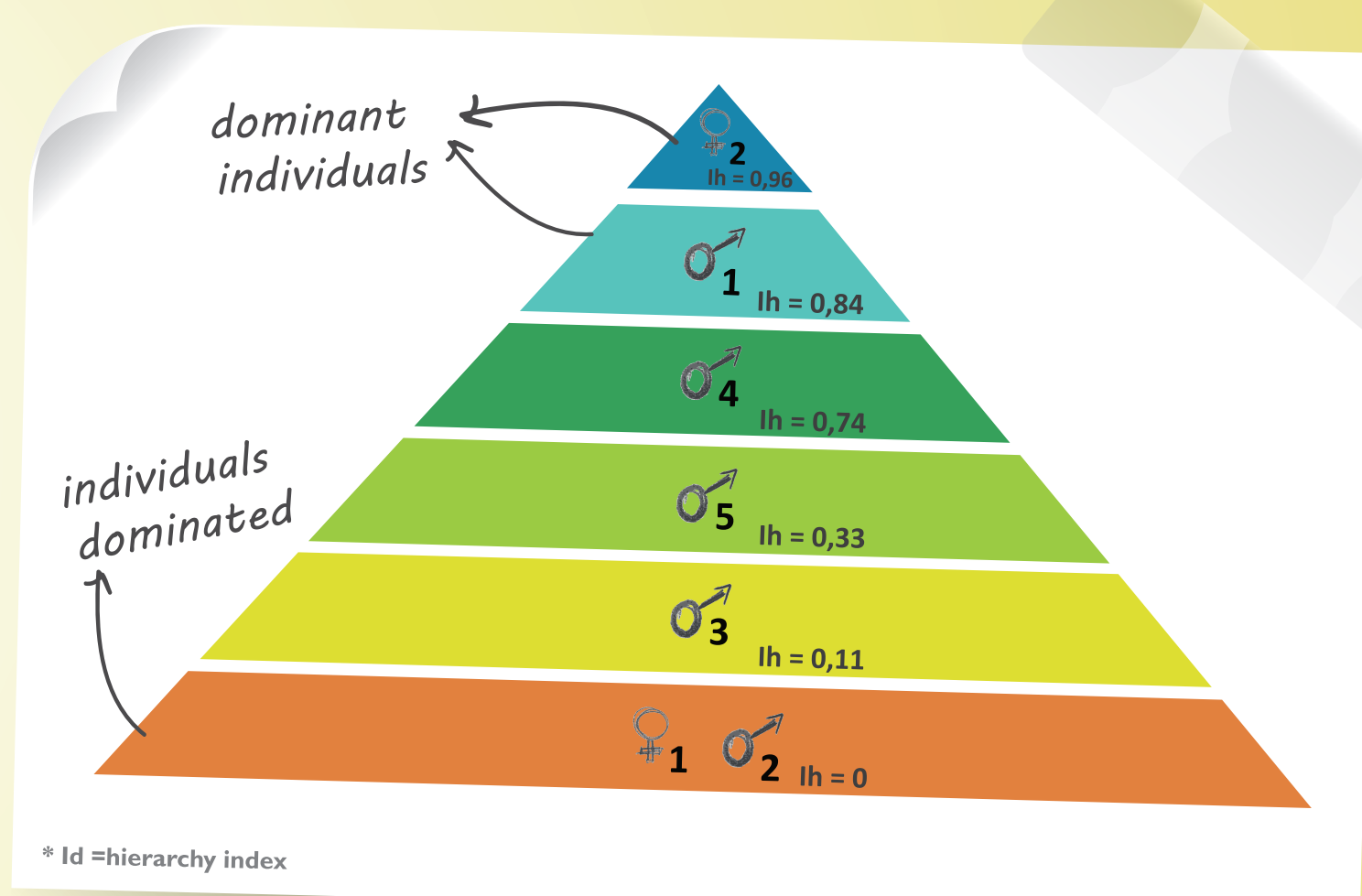
SPATIAL ORGANIZATION

SOCIOGRAM * association index



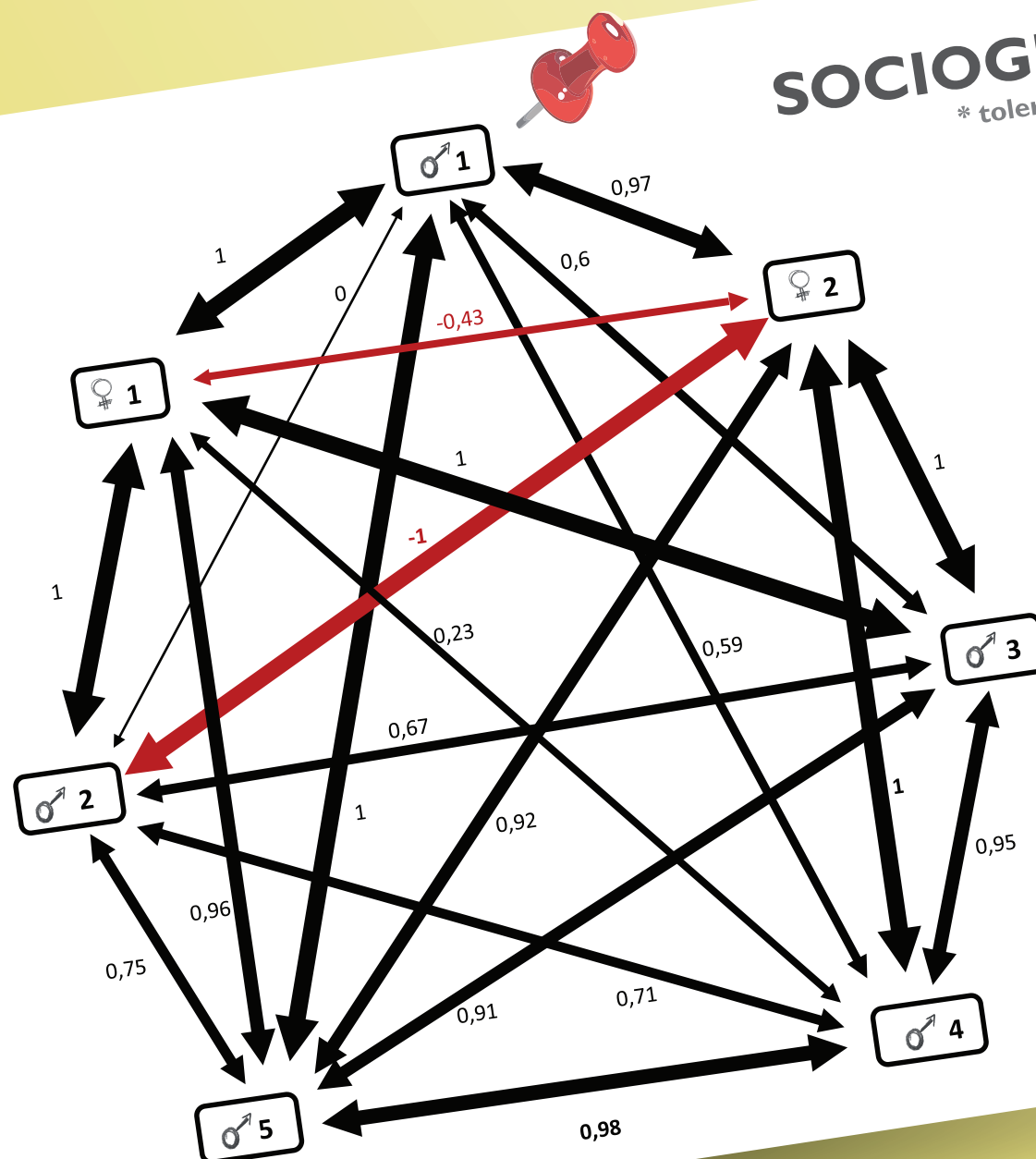
σ_2 , φ_1 then σ_3 the most isolated
 σ_5 intermediate
 σ_1 , φ_2 and σ_4 the least isolated

HIERARCHY



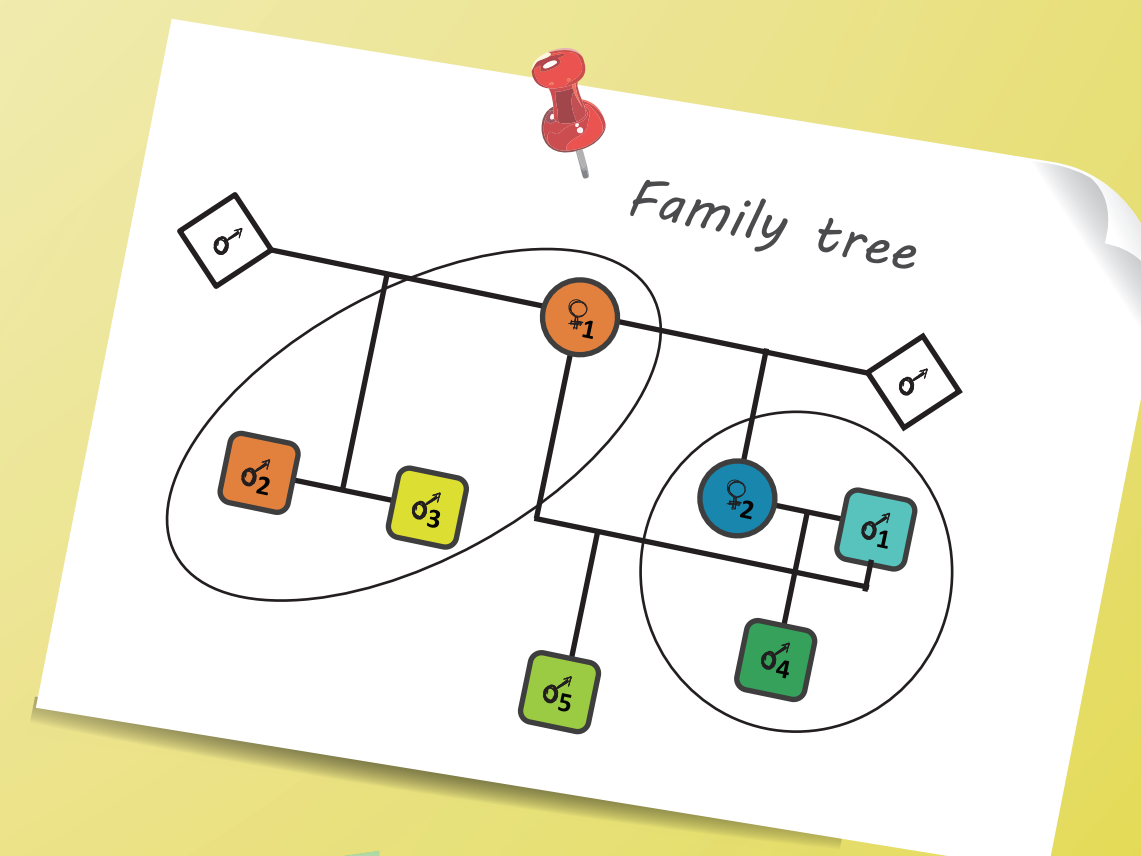
TOLERANCE

SOCIOGRAM * tolerance index



σ_2 and φ_2 don't tolerate themselves
 φ_1 and φ_2 : more agonistic than affiliative interactions
 σ_1 and σ_2 : no interaction
 σ_5 is the most tolerated
 σ_2 is the least tolerated
the 3 young are the best tolerated

Conclusion



First breeding couple suggested by coordinator is no longer the alpha dominant couple

- σ_1 close to φ_2
- φ_2 taken dominance
- φ_1 now dominated
- his young σ_2 and σ_3 also dominated
- his youngest σ_5 is intermediate and the best tolerated in the group

σ_3 , σ_4 and σ_5
=
the 3 youngest
=
the best tolerated



EAZA ANNUAL CONFERENCE
18-22 SEPTEMBER 2018

